



# Deep learning guided robotics

Council of Supply Chain Professionals

Luxembourg, November 21<sup>st</sup> 2017

Herbert ten Have, CEO



FIZYR

Founded in 2014  
by Prof. Wisse  
as Delft Robotics  
Staff of 13

Specialized in vision guided  
robotics through AI

Double Winner Amazon  
Picking Challenge 2016





FIZYR

# AI in the news



AI can detect Alzheimer's 10 years before symptoms show up

# AI in the news

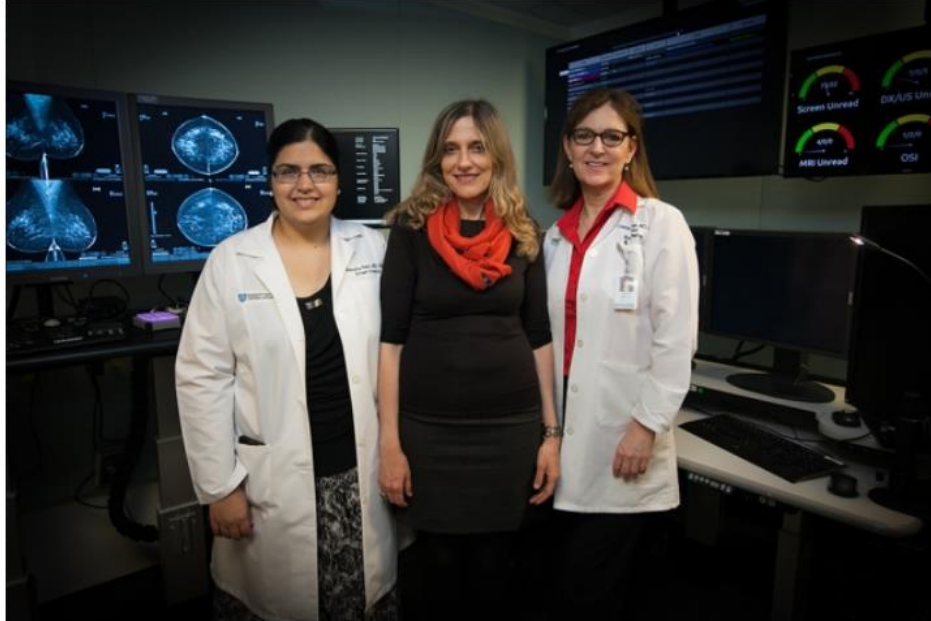
## MIT News

ON CAMPUS AND AROUND THE WORLD

Browse

or

Search



FULL SCREEN

Pictured, left to right, are: Manisha Bahl, director of the Massachusetts General Hospital Breast Imaging Fellowship Program; MIT Professor Regina Barzilay (center); and Constance Lehman, professor at Harvard Medical School and chief of the Breast Imaging Division at MGH's Department of Radiology.

Image: Jason Dorfman/CSAIL

## Using artificial intelligence to improve early breast cancer detection

Model developed at MIT's Computer Science and Artificial Intelligence Laboratory could reduce false positives and unnecessary surgeries.

Adam Conner-Simons | CSAIL  
October 16, 2017

▼ Press Inquiries

RELATED

home > tech

**Artificial intelligence (AI)**

## New AI can guess whether you're gay or straight from a photograph

An algorithm deduced the sexuality of people on a dating site with up to 91% accuracy, raising tricky ethical questions





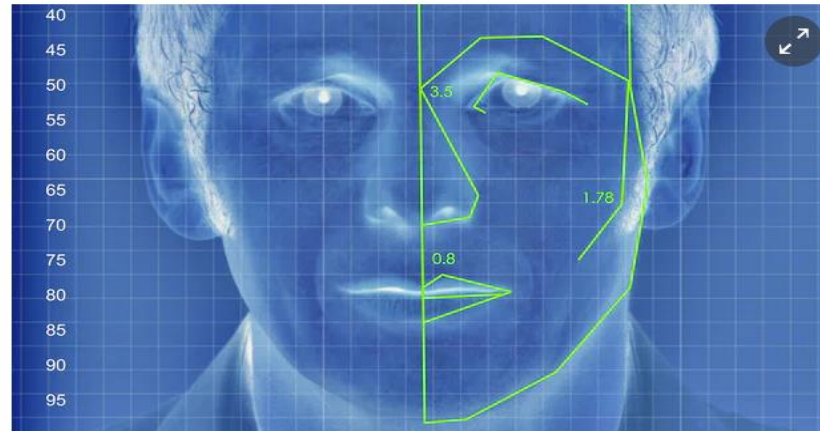

57,985

Sam Levin in San Francisco

[@SamTLevin](#)

[email](#)

Friday 8 September 2017 00.46 BST



An illustrated depiction of facial analysis technology similar to that used in the experiment. Illustration: Alamy

Artificial intelligence can accurately guess whether people are gay or straight based on photos of their faces, according to new research that suggests machines can have significantly better “gaydar” than humans.

The [study](#) from Stanford University - which found that a computer algorithm could correctly distinguish between gay and straight men 81% of the time, and 74% for women - has raised questions about the biological origins of sexual orientation, the ethics of facial-detection technology, and the potential for this kind of software to violate people’s privacy or be abused for anti-LGBT purposes.

**Most popular**



'Sound of a dog barking': North Korea ridicules Trump threat



India v Australia: second one-day international - live!



Acclaimed French chef asks to be stripped of three Michelin stars

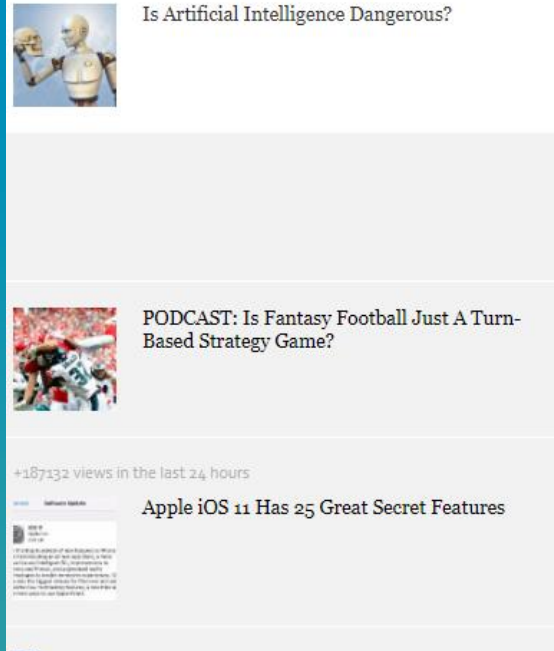
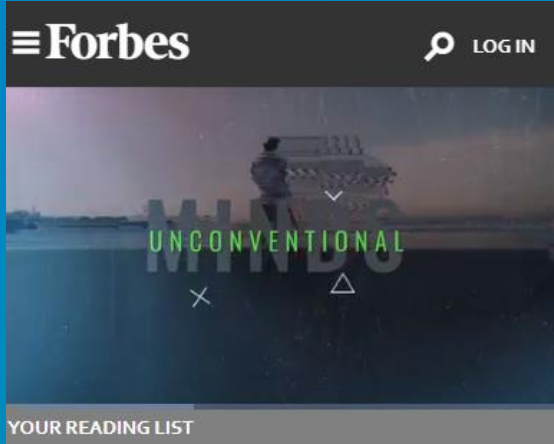


South Korea approves \$8m aid package for North Korea



Leader of gang suspected of murdering British kayaker in Brazil is killed

# AI in the news



Tech / #NewTech

MAR 25, 2016 @ 04:58 AM 37,741

## Is Artificial Intelligence Dangerous?



R.L. Adams, CONTRIBUTOR  
FULL BIO

Opinions expressed by Forbes Contributors are their own.





FIZYR





FIZYR







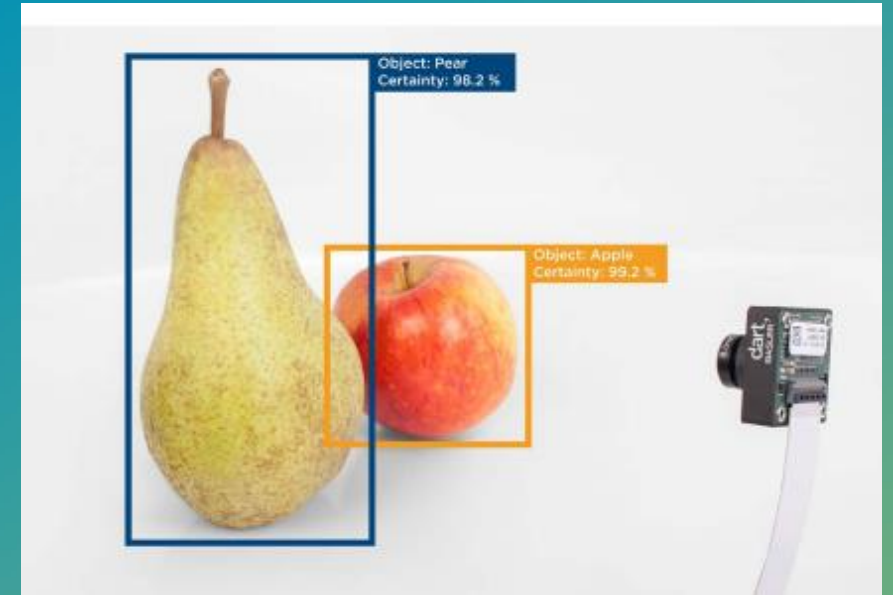
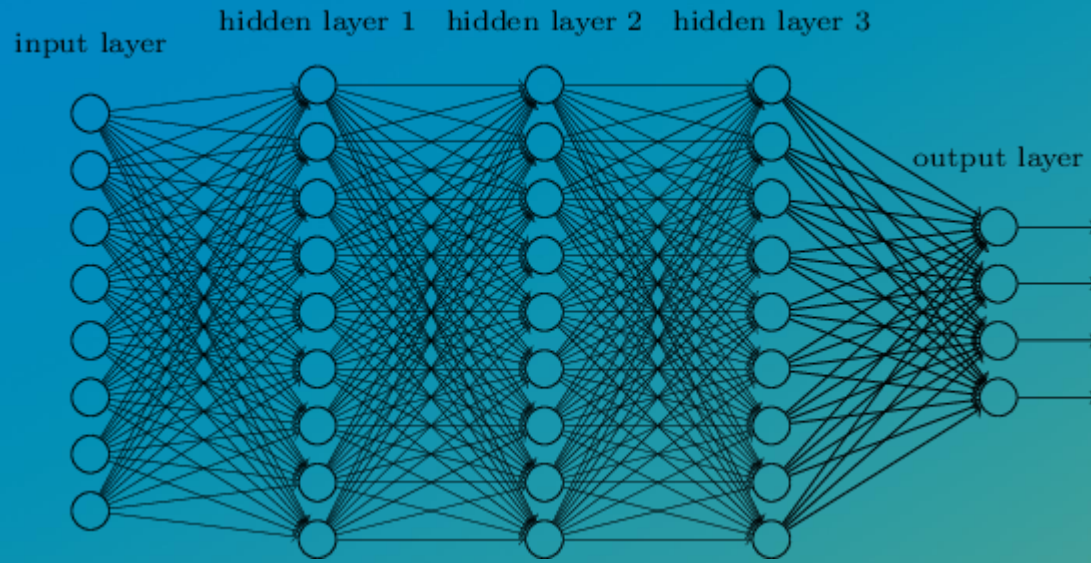
FIZYR



# The big challenge: variation



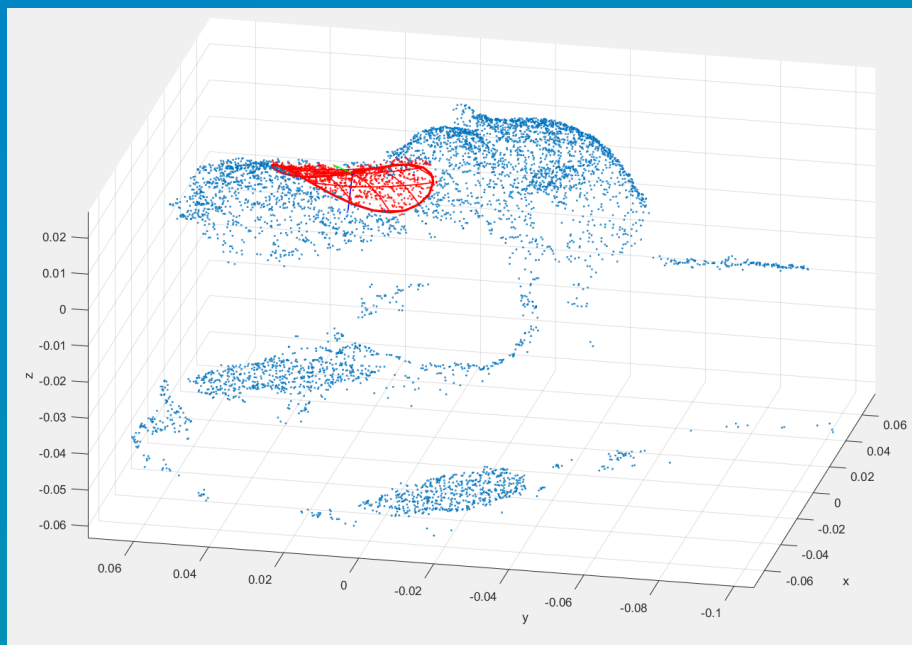
# Artificial intelligence





FIZYR

# Picking



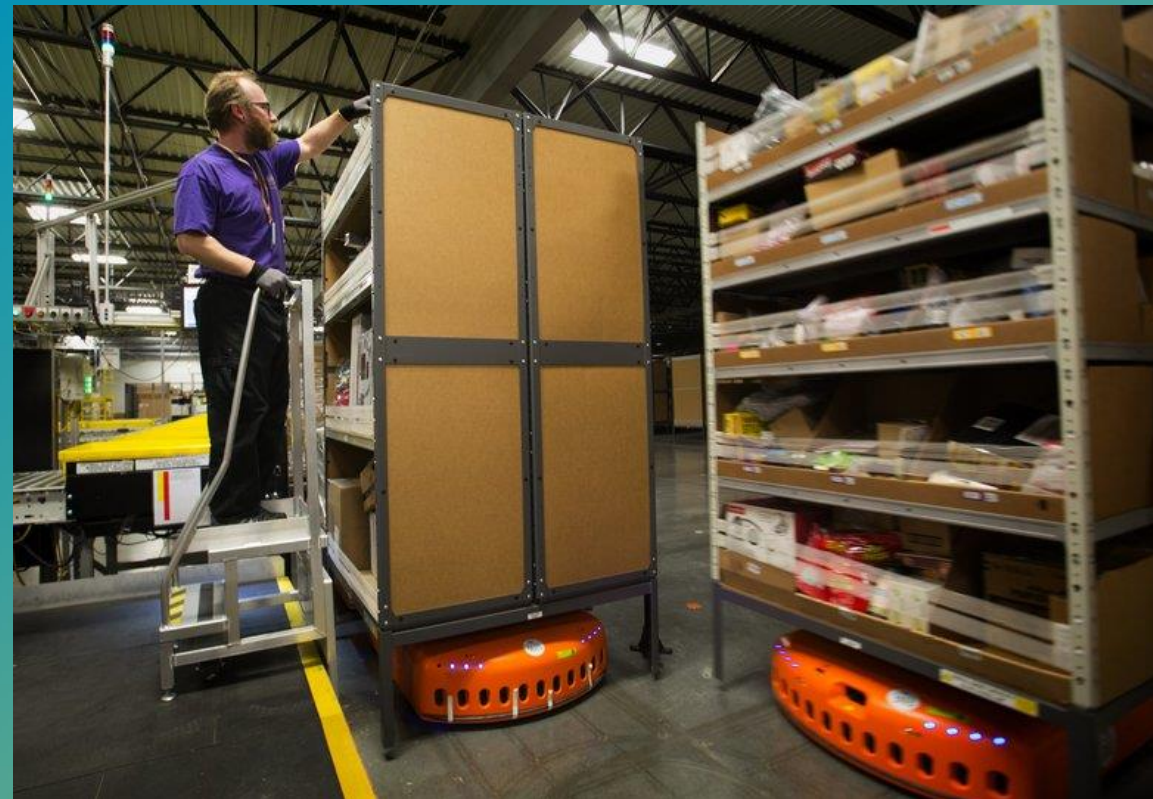
# Packages and order picking





FIZYR

# Amazon





FIZYR



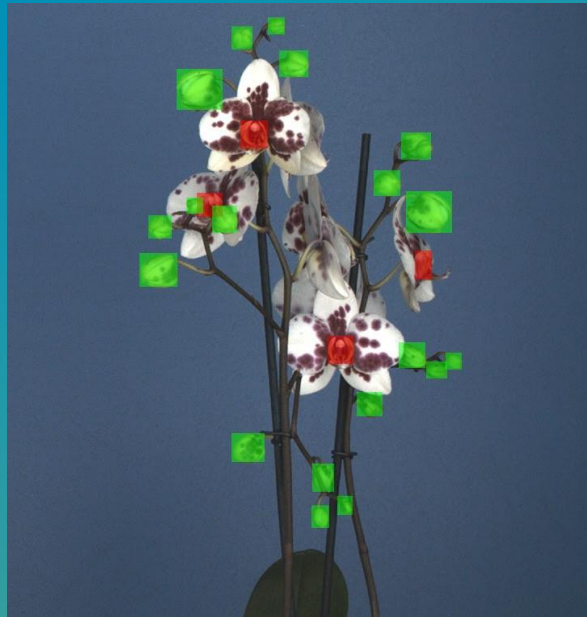
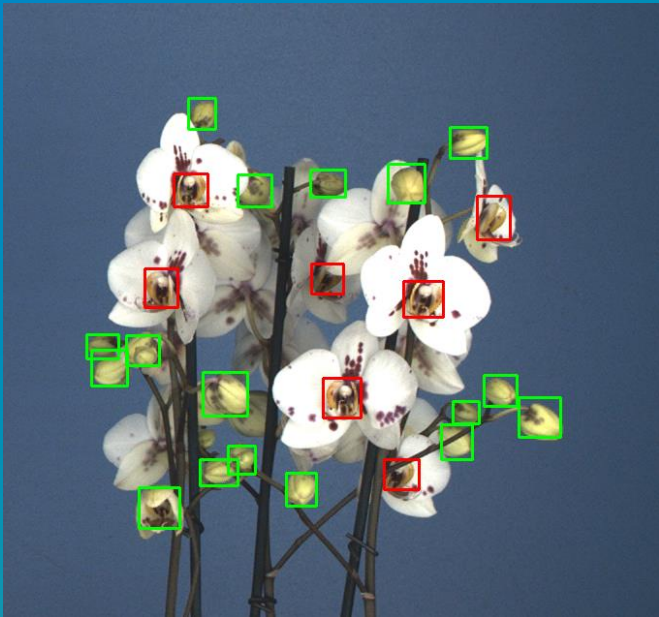


FIZYR

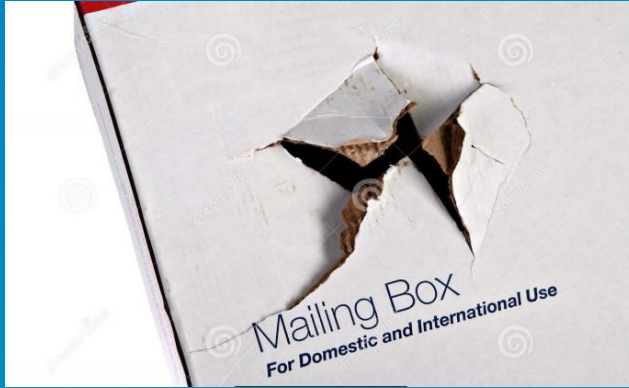




# Identification



# Quality control





# Applications & markets

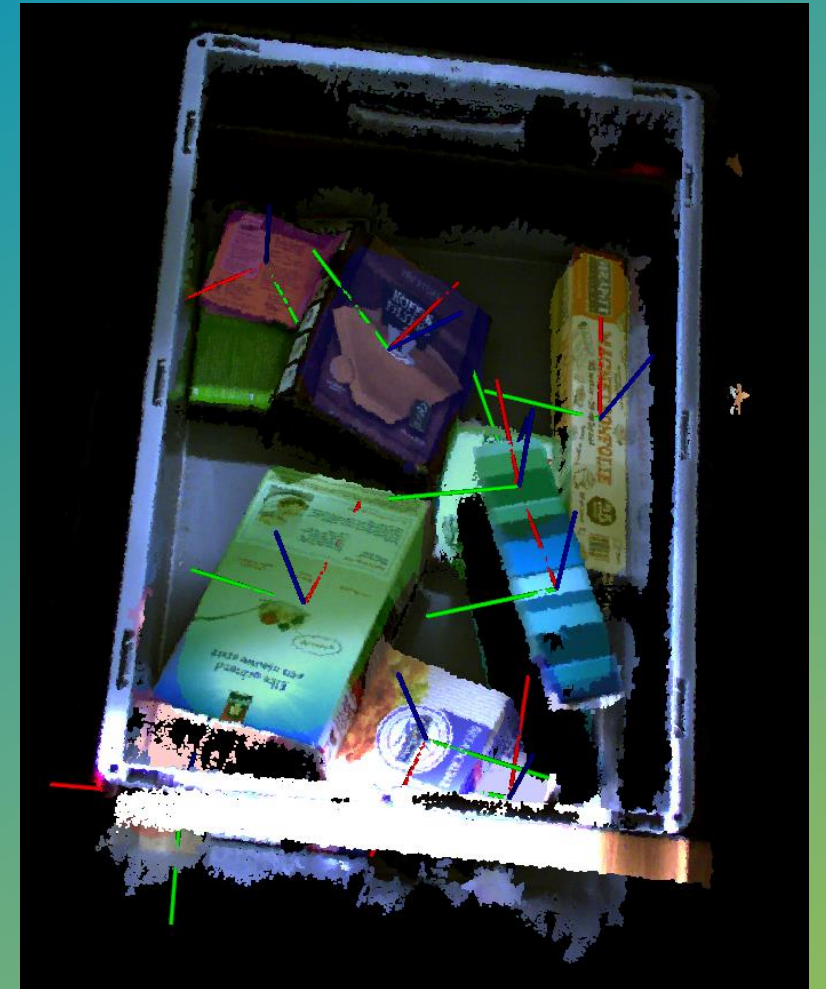
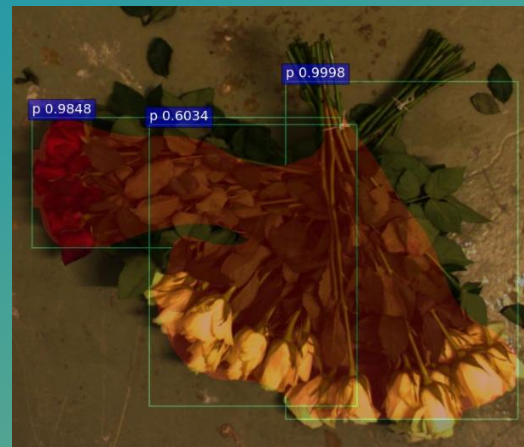
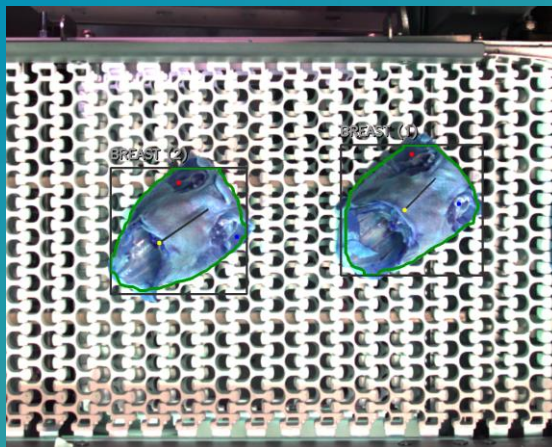
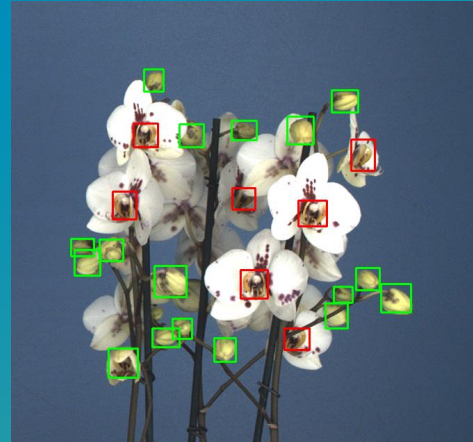
What?

Order picking  
Bin picking  
Quality control  
Identification

For whom?

Warehousing  
Postal sector

# Recent projects



**Herbert ten Have**

CEO

+31 6 53 555 955

[h.tenhave@fizyr.com](mailto:h.tenhave@fizyr.com)

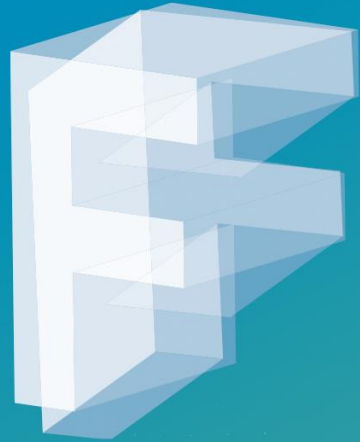
Julianalaan 67A

2628 BC Delft

The Netherlands

[fizyr.com](http://fizyr.com)





# FIZYR

Deep learning for  
vision guided robotics