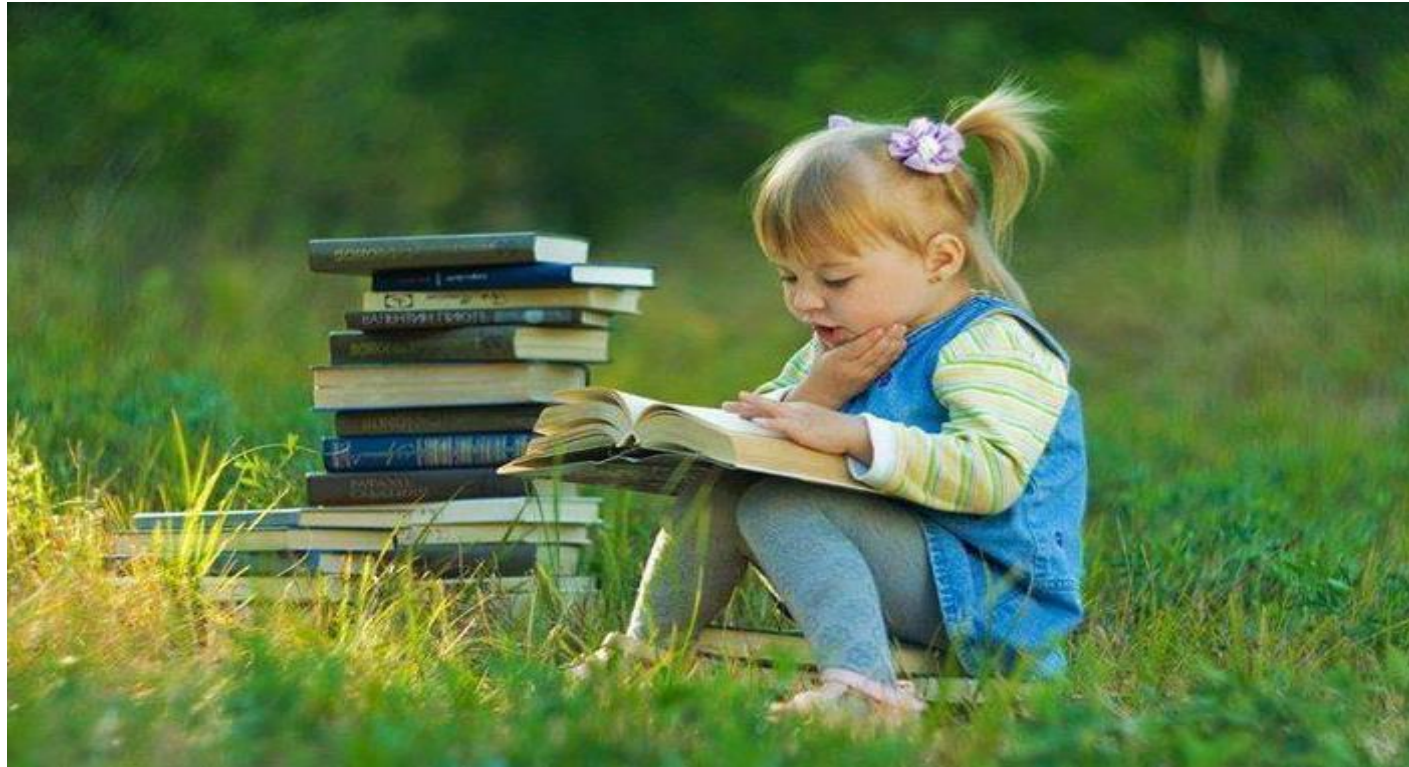




SUSTAINABLE URBAN LOGISTICS & MOBILITY



29/05/2018
Start-up conference
Cluster for Logistics
Luxembourg

Nobody delivers freshness like we do

-95% PM 2.5

-50% Noise



-39% CO₂

◆ Company Name

SUMY Luxembourg SARL

◆ Mission

Sustainable Urban Logistics & Mobility

◆ Sector

Cold pharma & Perishable supply chain

◆ Start

01.06.2018@  Luxembourg City
IncubatorHOUSE OF **STARTUPS**

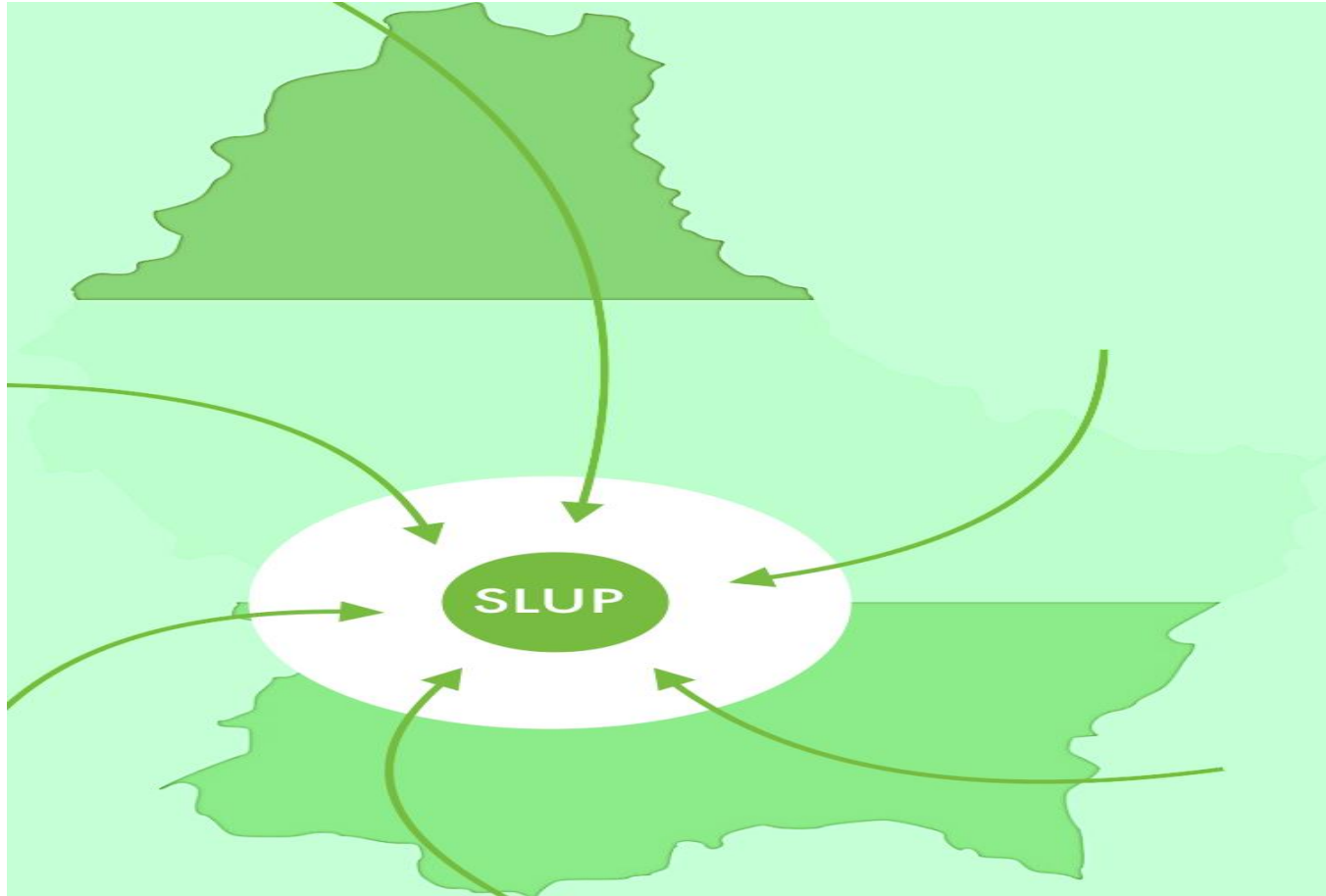
◆ Activity

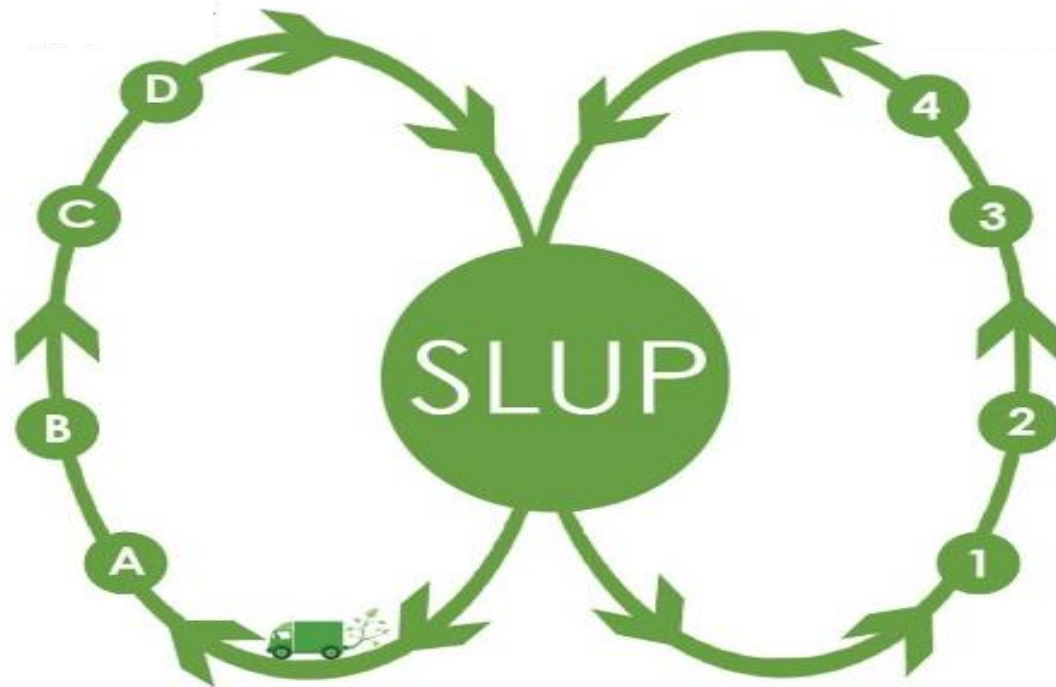
Emissions free mobility & logistics services for the cold supply chains

If a vaccine freeze or an
Ice cream melts it annihilate
it's power



WHERE WILL SUMY BE LOCATED?







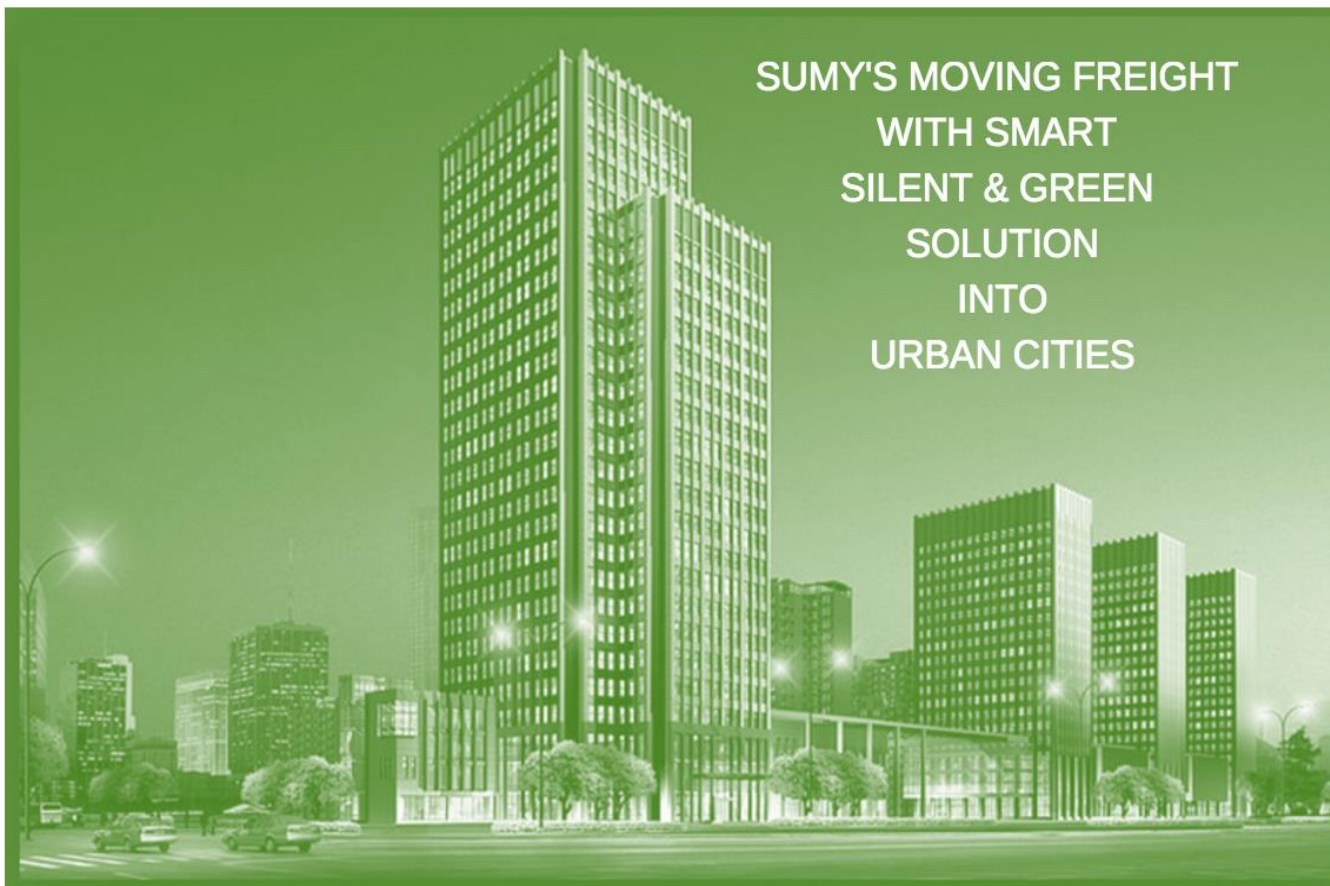
The **CBG** "compressed natural Biogas" engine is **efficient** and **sustainable**

-95% Pm2.5
- 45% CO2
-50% Noise

E-Cold Refrigeration System

- 100% noise emissions









- ① Cost effectiveness
- ② Sustainability
- ③ Safety and inclusiveness

Never Drink & Drive

Thank you !

Hinde Boulbayem
info@sumy.be
www.sumy.be

Some see economic problems in urban areas,
we see economic opportunities,
we call it urban entrepreneurship.
Mike Dean of King Graduate School, Bronx N-Y, USA