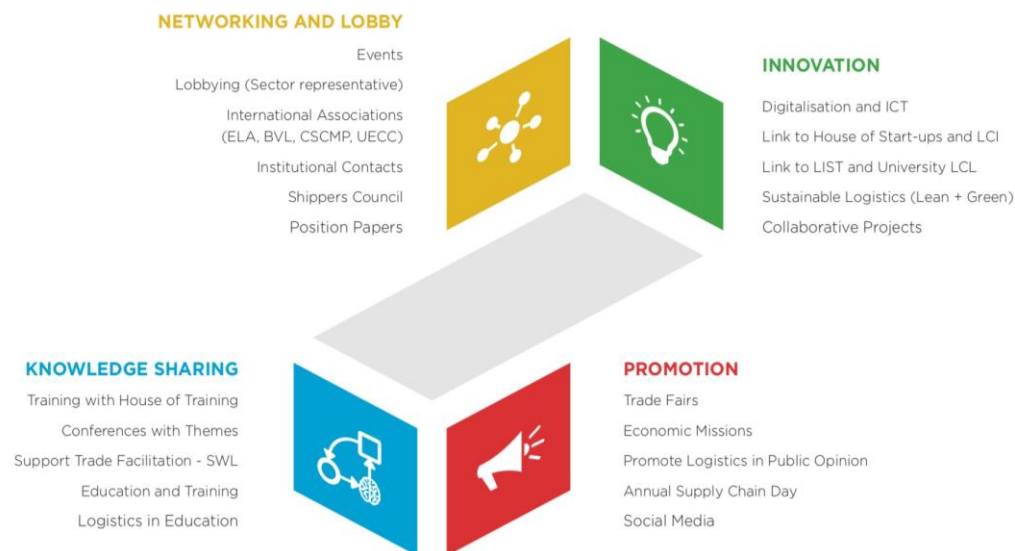


**CLUSTER
FOR
LOGISTICS**

LUXEMBOURG

ADDING VALUE IS THE KEY.

Smart Logistics and Supply Chain Luxembourg



January 2020

Cluster for Logistics Luxembourg A.s.b.l

The Cluster for Logistics Luxembourg (C4L) ID Card



The **Cluster for Logistics Luxembourg (C4L)** federates public actors & private companies to drive the sector since 2009.

Mission: support Luxembourg's logistics & diversification strategy

The Cluster regroups currently over 100 actors from the Logistics sector providing specific services. It focuses on **shippers and logistics companies** and welcomes organisations **serving or making use of logistics services**.

Charman C.Thelen



Temperature control Frankfurt 2015



Lean & Green 2018 Luxembourg



The C4L organizes about **30 events/year** with members providing networking for **over 1100 F-2-F participants/year**. Information is shared through web, LinkedIn, monthly News briefings and video snippets.



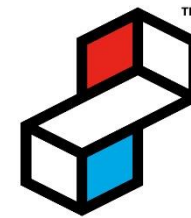
Economic mission China 2019



Transport & Logistics Munich 2019



Luxembourg international logistics hub



**CLUSTER
FOR
LOGISTICS**
LUXEMBOURG
ADDING VALUE IS THE KEY.

Luxembourg's **logistics strategy** implemented with stakeholders develops the current platforms into a resilient common hub with focus on digital innovation, Infrastructure (EUROHUB and Healthcare Center at the airport) and supply chain experts.

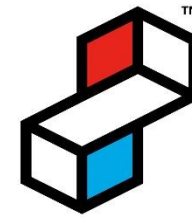
- Gateway from/to and through Europe
- Cross-dock hub for European land transport
- European and regional distribution centre
- Logistics centre for value added services
- World-class connectivity and IT
- Using sustainable logistics processes for the future

FM GLOBAL RESILIENCE INDEX

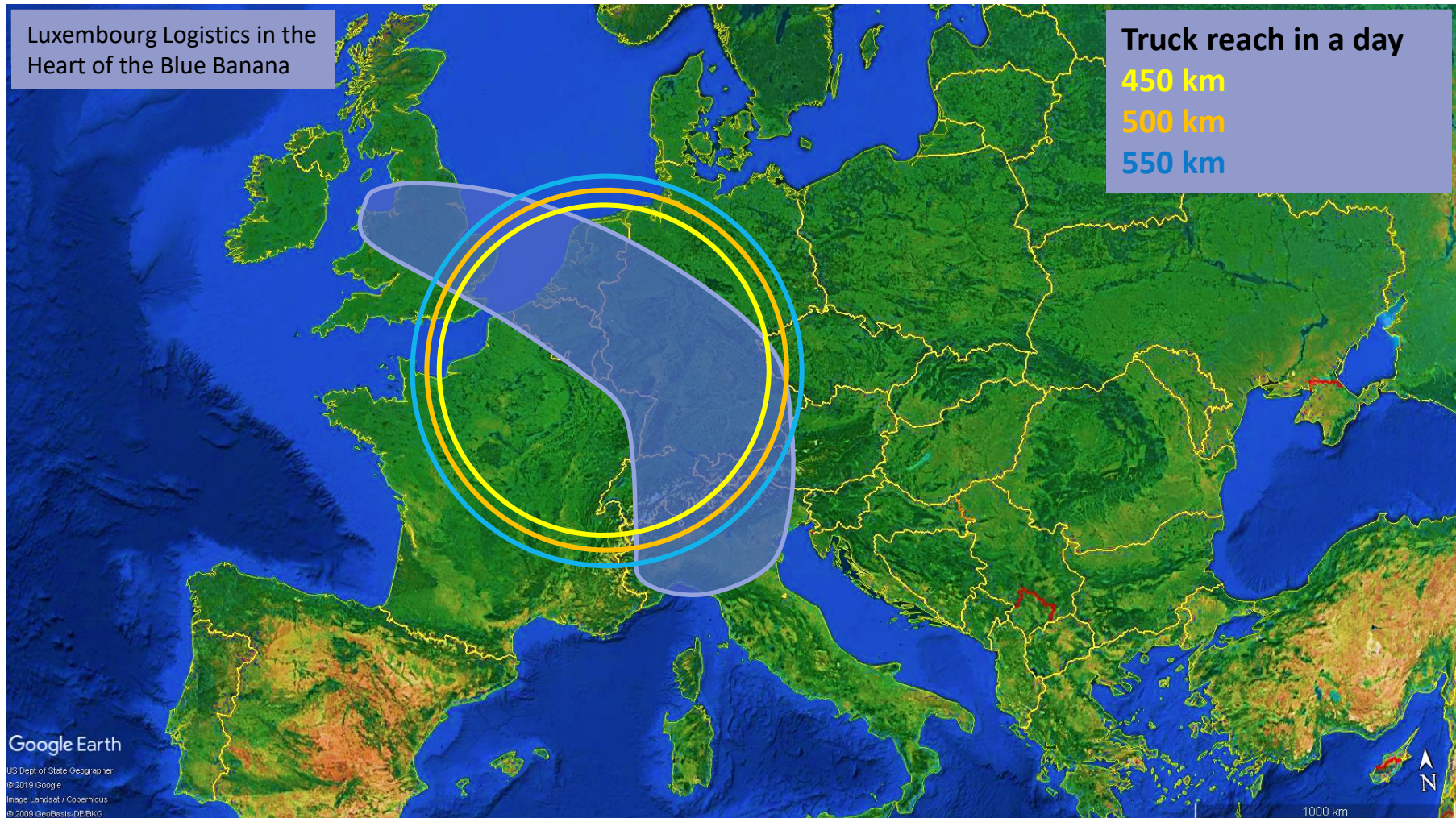
2018	SWITZERLAND	LUXEMBOURG	SWEDEN
Overall	1	2	3
Economic +	3	2	6
Risk Quality +	21	19	13
Supply Chain +	1	14	3

Fourth Quartile Third Quartile Second Quartile First Quartile

Luxembourg's ideal location in the Center of the Blue Banana



**CLUSTER
FOR
LOGISTICS**
LUXEMBOURG
ADDING VALUE IS THE KEY.



Why become Member of the Logistics Network in Luxembourg?

<https://www.c4l.lu/join-us>



**CLUSTER
FOR
LOGISTICS**

LUXEMBOURG
ADDING VALUE IS THE KEY.

Advantages for Company membership 1.200€/year

- ✓ Company logo is displayed
- ✓ Company is presented on the company members section on the website
- ✓ Events of the main supporting partners can be added on the agenda of the website
- ✓ Neutral distribution of company news via social media (Twitter, Linked In)
- ✓ Publish PR articles and employment offers on our web page



Knowledge and networking

- ✓ Gain knowledge of the whole logistics industry
- ✓ Regular national and international networking opportunities with industrial logistics actors and service providers
- ✓ Information sharing (e.g. newsletters, website information, personal meetings) and neutral consulting by C4L management
- ✓ Free participation in German BVL logistics association 2 y as member of C4L *Ltd. Offer
- ✓ Support for LEAN and GREEN sustainable logistics program supported by MDDI at favourite rates
- ✓ Participation in program working groups to improve competitiveness
- ✓ Influence recommendations on policy, legal framework, education and marketing
- ✓ European representation with CCA, BVL and ELA



The Cluster for Logistics Luxembourg A.s.b.l. initiated in 2009 by the Ministry of Economy, the Luxembourg Chamber of Commerce and partners is supported by following partners



LE GOUVERNEMENT
DU GRAND-DUCHÉ DE LUXEMBOURG
Ministère du Développement durable
et des Infrastructures



LE GOUVERNEMENT
DU GRAND-DUCHÉ DE LUXEMBOURG
Ministère de l'Économie
et du Commerce extérieur

**CHAMBER
OF COMMERCE**
LUXEMBOURG
POWERING BUSINESS



5



Advantages Premium Company membership 3.600€/year

Services that Company members receive (see p.5) plus:

Premium membres (effectifs) gain **enhanced visibility** during Cluster events in Luxembourg and abroad as their logo is prominently displayed on roll-ups, in presentations, on the web and in the Cluster documentation like annual reports, flyers, brochures, as **“Main supporting partner”**

- ✓ Dedicated logistics News and social media blogs will focus on input from **supporting partners**
- ✓ Events of supporting partners will be added to the agenda of the website and social media
- ✓ Effective membership being limited, it facilitates access to the board
- ✓ Facilitation of contacts to institutional members and stakeholders
- ✓ Annual Informal dinner or lunch for high-level networking with partners and board
- ✓ Neutral consulting and exchange on strategy with C4L management
- ✓ Influence recommendations to administrations on policy, legal framework and education
- ✓ Obtain support by C4L and partners to target potential prospects, projects and customers
- ✓ Influence recommendations to administrations on policy, legal framework, education
- ✓ The board members are selected from Premium members representatives

The Cluster for Logistics Luxembourg A.s.b.l. initiated in 2009 by the Ministry of Economy, the Luxembourg Chamber of Commerce and partners is supported by following partners



LE GOUVERNEMENT
DU GRAND-DUCHÉ DE LUXEMBOURG
Ministère du Développement durable
et des Infrastructures



LE GOUVERNEMENT
DU GRAND-DUCHÉ DE LUXEMBOURG
Ministère de l'Économie
et du Commerce extérieur

**CHAMBER
OF COMMERCE**
LUXEMBOURG
POWERING BUSINESS

Offer for 2 years Start-up membership 380€/year

- » Company logo is displayed on List of start-ups
- » Attendance to specific **Start-up events** for **matchmaking and networking**
- » Company is presented on the company members section on the website
- » Company gets a possibility to join a Luxembourg Logistics conference with a sales pitch “that fits”



Knowledge and networking

- » Gain knowledge of the Luxembourgish and European logistics industry
- » Meet and network with company premium members and institutional stakeholders
- » Regular national and international networking opportunities
- » Contact industrial logistics actors and service providers
- » Information sharing (e.g. news briefing, website, personal meetings) and consulting by C4L management
- » Participation by max. 2 company representatives to conference free of charge (unless event includes fee)

Collaboration

- » Obtain support by C4L and partners to target potential prospects, customers contacts
- » Influence recommendations to administrations on new policy, legal framework, education and marketing

Decision on membership lies with C4L management and board:

Requirement: Year of Incorporation/creation, Document that company meets innovation criteria's and does not exist more than 5 years

The Cluster for Logistics Luxembourg A.s.b.l. has been created in 2009 under the initiative of the Ministry of Economy and Foreign Trade and the Luxembourg Chamber of Commerce and is supported by following partners



LE GOUVERNEMENT
DU GRAND-DUCHÉ DE LUXEMBOURG
Ministère du Développement durable
et des Infrastructures



LE GOUVERNEMENT
DU GRAND-DUCHÉ DE LUXEMBOURG
Ministère de l'Économie
et du Commerce extérieur

**CHAMBER
OF COMMERCE
LUXEMBOURG**
POWERING BUSINESS



Individual Memberships

Advantages for

Personal Members – 240 Euro/year

Young professionals – 75 Euro/year

Retired Professionals – 75 Euro/year



- » Invitation to our events and networking opportunities
- » Gain knowledge of the whole logistics industry
- » Regular national and international networking opportunities with many industrial logistics actors and service providers
- » Participation in working groups to improve competitiveness
- » Information sharing (e.g. newsletters, website information, personal meetings) and neutral consulting by C4L management
- » Influence recommendations to administrations to improve competitiveness on policy, legal framework, education and marketing
- » European representation with CCA, BVL and ELA
- » The individual and retired members will not be published on the web-site

Young Professionals

- » The age limit for the Young Professionals Membership is set below 33 (birthdate after 31 December 1987)
- » The membership will be transformed into a regular membership after attaining the age of 33 unless canceled three months before year-end.

The Cluster for Logistics Luxembourg A.s.b.l. has been created in 2009 under the initiative of the Ministry of Economy and Foreign Trade and the Luxembourg Chamber of Commerce and is supported by following partners



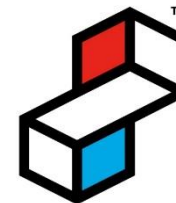
LE GOUVERNEMENT
DU GRAND-DUCHÉ DE LUXEMBOURG
Ministère du Développement durable
et des Infrastructures



LE GOUVERNEMENT
DU GRAND-DUCHÉ DE LUXEMBOURG
Ministère de l'Économie
et du Commerce extérieur



Key pillars C4L



**CLUSTER
FOR
LOGISTICS**

LUXEMBOURG

ADDING VALUE IS THE KEY.

NETWORKING AND LOBBY

Events
Lobbying (Sector representative)
International Associations
(ELA, BVL, CSCMP, UECC)
Institutional Contacts
Shippers Council
Position Papers



INNOVATION

Digitalisation and ICT
Link to House of Start-ups and LCI
Link to LIST and University LCL
Sustainable Logistics (Lean + Green)
Collaborative Projects

KNOWLEDGE SHARING

Training with House of Training
Conferences with Themes
Support Trade Facilitation - SWL
Education and Training
Logistics in Education



PROMOTION

Trade Fairs
Economic Missions
Promote Logistics in Public Opinion
Annual Supply Chain Day
Social Media

Networking and Lobby Conferences, Positions...



**Conferences with international associations like Chamber of Commerce Lux.,
UECC, BVL, ELA, Shippers Councils and CSCMP**



Networking opportunities at our events

Knowledge Sharing Education, Training...



**Speed Dating for High School
apprenticeships - Diplome de
Technicien Logistics**



Expert Conferences with Partners

Support for DT and University Students



 **SINGLE WINDOW
FOR LOGISTICS**
LUXEMBOURG

 **CLUSTER
FOR
LOGISTICS**
LUXEMBOURG
ADDING VALUE IS THE KEY.

Logistics News Briefing
December 2019

TOPICS

- Top Stories
- Digital Logistics
- Perishables & Pharma
- Infrastructures
- Regulation & Procedures
- Express & eCommerce
- Maritime & Waterways
- Green Logistics

**Monthly news sharing in cooperation
with SWL**

Innovation Projects

Lean & Green, Digitalisation...



**Start-Up matchmaking
conferences**



**LEAN & GREEN Office
for Luxembourg**

C4L Digital Workgroup



Promotion International Missions, Trade Fairs...

LU^{EMBOURG}
LET'S MAKE IT HAPPEN

**transport
logistic**

MAY 9 - 12 2017
MESSE MÜNCHEN
VISIT US I
HALL B1, BOOTH 314



International Conferences

TransportLogistic Munich
Europe's largest Meeting for
the community



FruitLogistica Berlin Booth for Perishables

Thanks to partners, 24 Effective members & > 100 members 2019



LE GOUVERNEMENT
DU GRAND-DUCHÉ DE LUXEMBOURG
Ministère de l'Éducation nationale,
de l'Enfance et de la Jeunesse



THE GOVERNMENT
OF THE GRAND DUCHY OF LUXEMBOURG
Ministry of the Economy



LE GOUVERNEMENT
DU GRAND-DUCHÉ DE LUXEMBOURG
Ministère de la Mobilité
et des Travaux publics

Département de la mobilité
et des transports

- Industrial companies

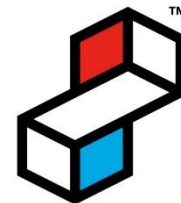


- Logistics companies



- Service providers





**CLUSTER
FOR
LOGISTICS**
LUXEMBOURG
ADDING VALUE IS THE KEY.

Trade facilitation

Single Window for Logistics www.swl.lu

The information portal brings together, in a single centralized location, information concerning the services offered by Luxembourg administrations.

www.swl.lu

TRADE FACILITATION

The Single Window for Logistics facilitates collaboration between economic operators and government agencies of the logistics sector by providing a single administrative point of access for electronic exchanges related to international trade flows. The Customs Administration cooperates with all other involved government agencies to propose easy and fast import/export procedures.

CUSTOMS FORMALITIES AND OTHER PROCEDURES

All goods imported, exported or dispatched within the European Union are subject to the same standard obligations. Some types of goods have additional specific formalities and constraints.

- GENERAL FORMALITIES
- TAXES & FEES
- REQUIRED DOCUMENTS
- ONLINE SERVICES
- GOVERNMENT AGENCIES
- FAQ



ANIMALS



FOOD & FEED



PLANTS & TIMBER



HEALTH PRODUCTS



RESTRICTED
TRADING



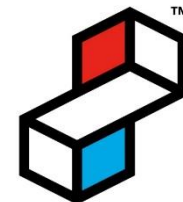
GENERAL CARGO

PROCEDURES GUIDE

Find the appropriate information in just a few clicks

➤ ACCESS THE INTERACTIVE
GUIDE

Draft SAVE THE DATES 2020 www.c4l.lu/events



**CLUSTER
FOR
LOGISTICS**
LUXEMBOURG
ADDING VALUE IS THE KEY.

Date

Jan. 16th

Feb. 5th -7th

February 10th 11h30-12h45

February 10th 12h45-15h

15-23. February Carnival Holiday

March 12th 12h-18h

March 24 or 26th

April 2nd

4-19 April Easter School Holiday

April 23rd

April 27th or 30th TBD

May 12 or 14th Tentative

30.5 -7.June Pentecostal Holiday

June 16 or 18th - 14h-17h

September 22nd – 14h-16h30

October 1st TBC

October 20th

Nov 24th

Nov 30th

For members

Shippers council BMI Europe (On invitation only)

Fruit Logistica Trade Fair, Berlin www.fruitlogistica.de

Board meeting

Premium Members Lunch (exclusive)

Start-up & Innovation matchmaking

UJET visit with BVL

Shippers council Arcelor TBC (On invitation only)

General Assembly C4L

Talent Development & Speed Dating D.T. en Logistique

(Tentative) 1st Logistics Innovation Hackathon

16th Luxembourg Logistics Conf. "New energies in transport"

Including Lean& Green awards

Visit Biogros Organic product retailer – Munsbach

Luxembourg Start-up event on Supply Chain

Stremmer Projects Insight Industry 4.0

17th Luxembourg Logistics Conference Theme TBC

3rd Luxembourg-Poland Business conference

Partner event for Logistics



March 5/6th



UECC conference - Zürich

March 10th eXplore Uni.lu



LUXEMBOURG CENTRE
FOR LOGISTICS AND SUPPLY
CHAIN MANAGEMENT (LCL)

April 16th German Tag der
Logistik - www.bvl.de



TBC Tentative BVL event

Barbecue

www.bvl.de/Luxembourg



Oct. 21-23 Deutscher Logistik
Kongress in Berlin -
www.bvl.de/dlk

Contact us

For more information: www.c4l.lu

Contact us at : info@c4l.lu

Director

Malik Zeniti

+352 42 39 39 849

Development advisor

Assistant

Ronny Wolff

+352 42 39 39 848



President

Directeur general
Chambre of commerce
Carlo Thelen

+352 42 39 39 300



Join us on Twitter and follow us on LinkedIn

