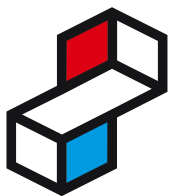


**CLUSTER  
FOR  
LOGISTICS**

LUXEMBOURG

**ADDING VALUE IS THE KEY.**

SINCE 2009



# WHY, HOW, WHAT?

## Cluster for Logistics?

---

### Why to join the C4L?

Through our Passion for logistics and supply chain,  
we connect People, Business and Communities around the world!

### HOW You Benefit?

*By connecting our members, we improve and revolutionize your supply chain.*

### WHAT Is In For You?

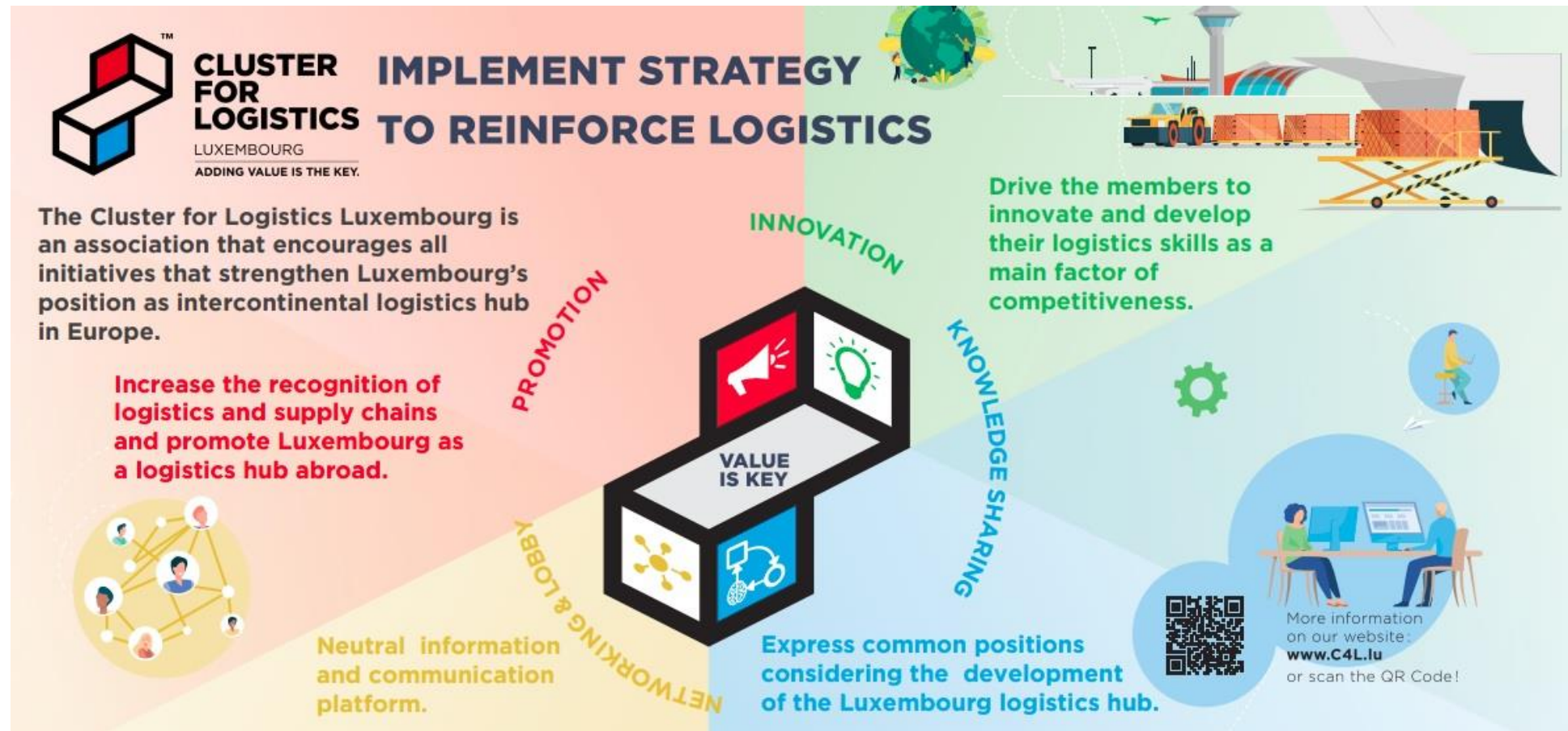
*We simply make great connections!*

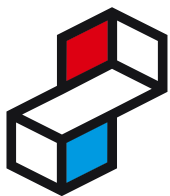
*Want to join a great Network?*



# Cluster for Logistics Luxembourg

## Key Pillars of the C4L



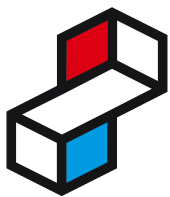


# WHY, HOW, WHAT ?

## 10 Good Reasons Why Luxembourg!

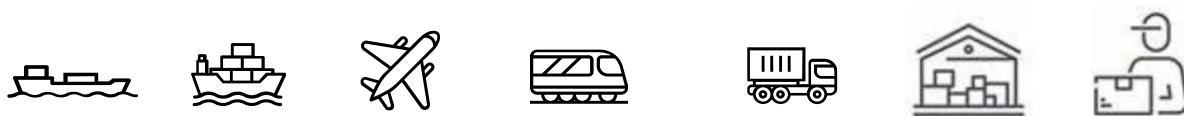
- ✧ LOCATED IN THE HEART OF EUROPE
- ✧ AIR LINKS TO ALL CONTINENTS
- ✧ AN EXTENDED GATEWAY TO MAJOR EUROPEAN PORTS
- ✧ CONNECTED TO EU CONSUMERS
- ✧ AN ADVANCED ICT ENVIRONMENT
- ✧ MULTIMODAL TRANSPORT INFRASTRUCTURES
- ✧ FAST AND EFFICIENT AIRPORT
- ✧ EASY AND FAST IMPORT/EXPORT PROCEDURES
- ✧ CUSTOMS AND VAT SUPPLY CHAIN OPTIMIZATION
- ✧ AN EFFICIENT, TIME- AND COST-EFFECTIVE SUPPLY CHAIN MANAGEMENT





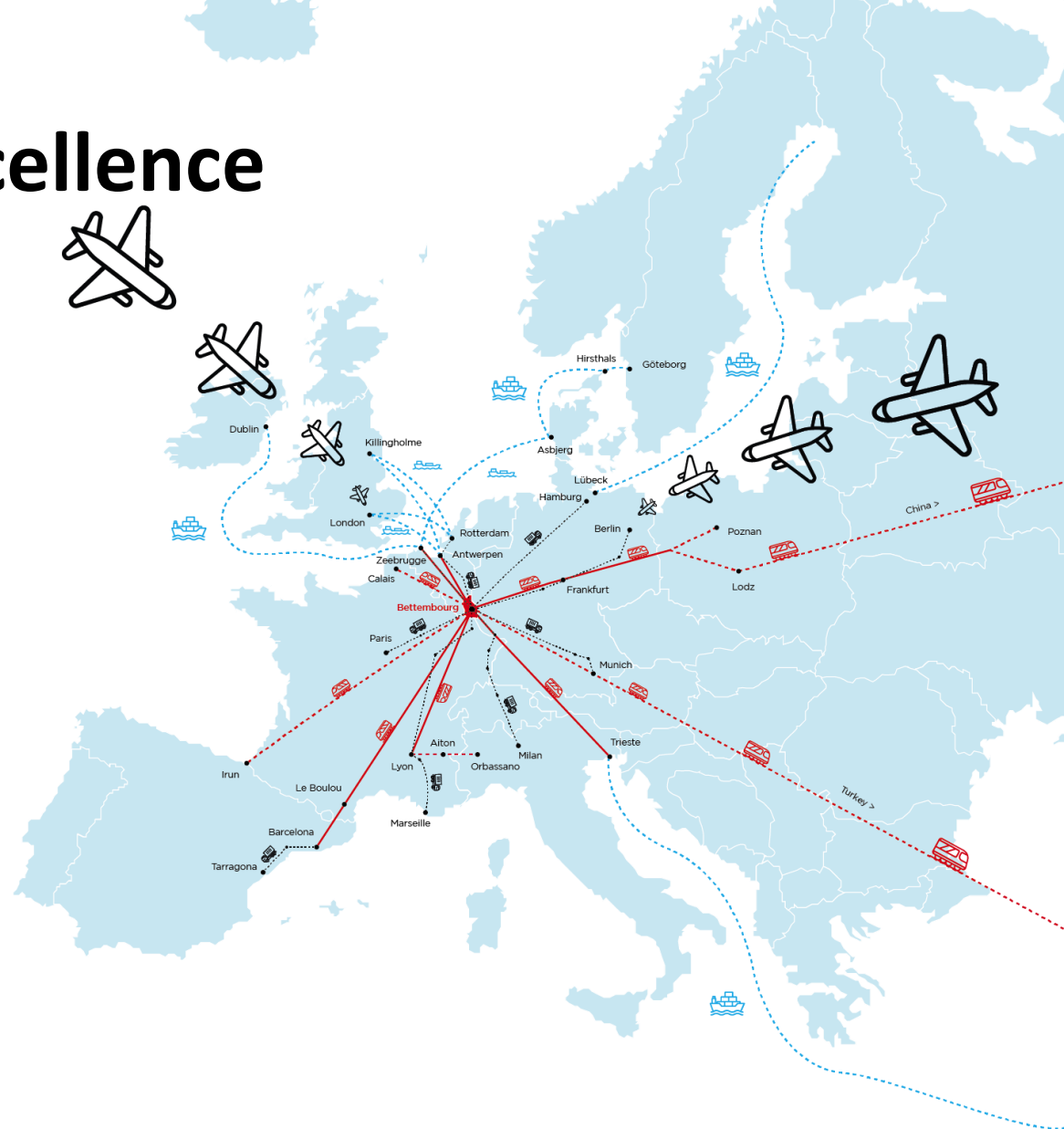
# Luxembourg, Your European Hub of Excellence

Luxembourg is based in the heart of Europe  
and customer centric well positioned to offer you:



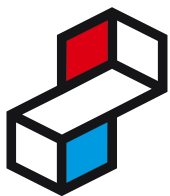
## Luxembourg adds Value in your Supply Chain:

- ✦ excellent Logistics and Road Distribution Centers for E-commerce.
- ✦ Rail Multimodal Hub cross Europe North-South, East-West corridor,
- ✦ State of the Art Pharma Center based on an End2End GDP Solution
- ✦ Inland Port for bulk and liquids
- ✦ « Priority on Cargo » with the fastest, safest, securest LUX Cargo Airport for IV's as Aerospace, Automotive and New Mobility, Consumer Retails, Pharma & Healthcare, High Tech, Telecom and Semicon, Industrial, Off-size, Perishables & Life Animals.



## CLUSTER FOR LOGISTICS





# Logistics in Luxembourg

## Luxembourg, the Logistics HUB of Excellence

### LUX Key Figures in Transport & Logistics

Compagnies: +1200 Compagnies

Turnover : 1.4 Billion EUR 2,8% of GDP

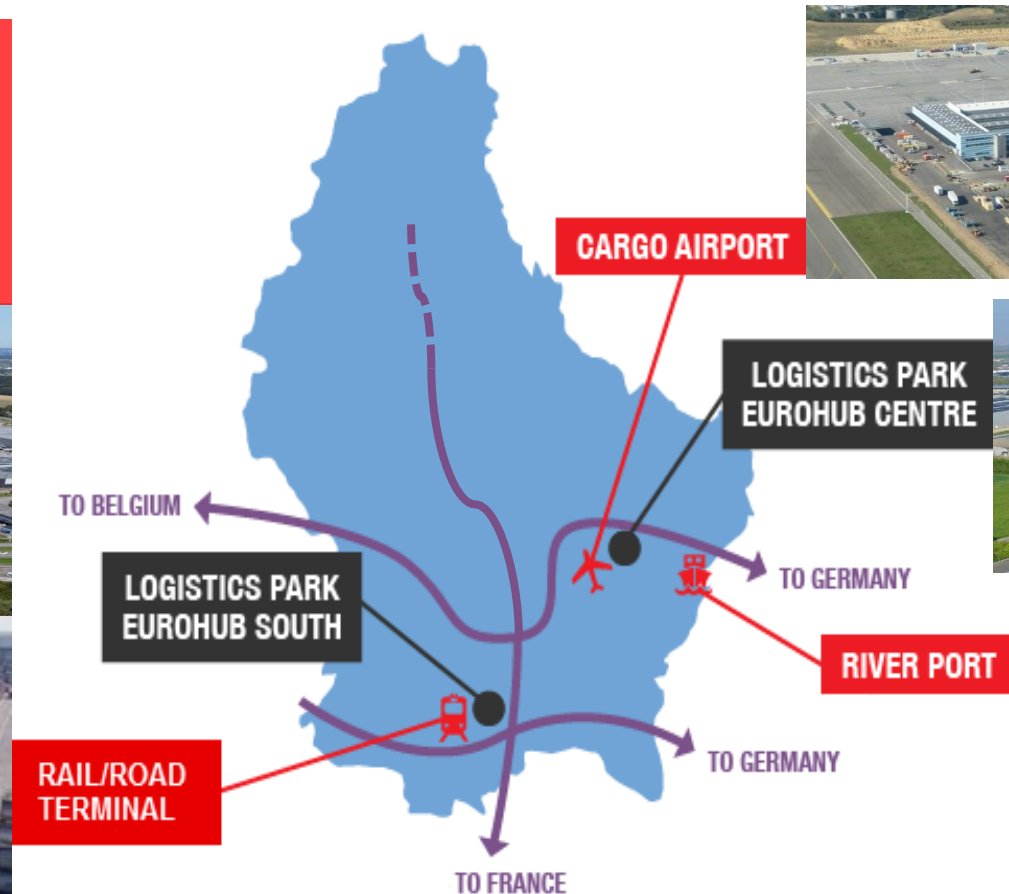
Employment: direct + 27.300 FTE

: Indirect jobs 6.000

: 3,6% of total workforce



### CLUSTER FOR LOGISTICS







# Logistics in Luxembourg

**“Priority on Cargo”** LUX Aircargo Center, Findel



## Figures :

**1.200.000 tons** Annual Capacity

**58.000 m2** On-site forwarder logistics centre:

**Securest, fastest and efficient** ground handling operations:

**2 hours** for unloading and loading of a Boeing 747/8F

**2 hours** for Thru ULD's to RFS Road Feeder Service

**12 x dedicated** wide body aircraft positions

**State of the Art Healthcare & Pharmaceuticals Centre**

(EU GDP 2014): **818 m<sup>2</sup> 2-8 °C & 1600 m<sup>2</sup> 15-25 °C &**

**6 temperature-controlled truck docks**

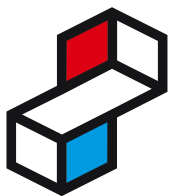
**12 dedicated full freighter handling positions**

**113 truck docks** and sufficient truck parking positions

**90 connections** worldwide to every continent

**Over 30 flights/week** connecting Luxembourg (CV) to China

**Products under IV Verticals :** Perishables, GDP Pharmaceuticals, DGR Hazardous Goods, Valuable goods under TAPA, High Tech, Techcom & Mobility , Live animals, Off-sized cargo.



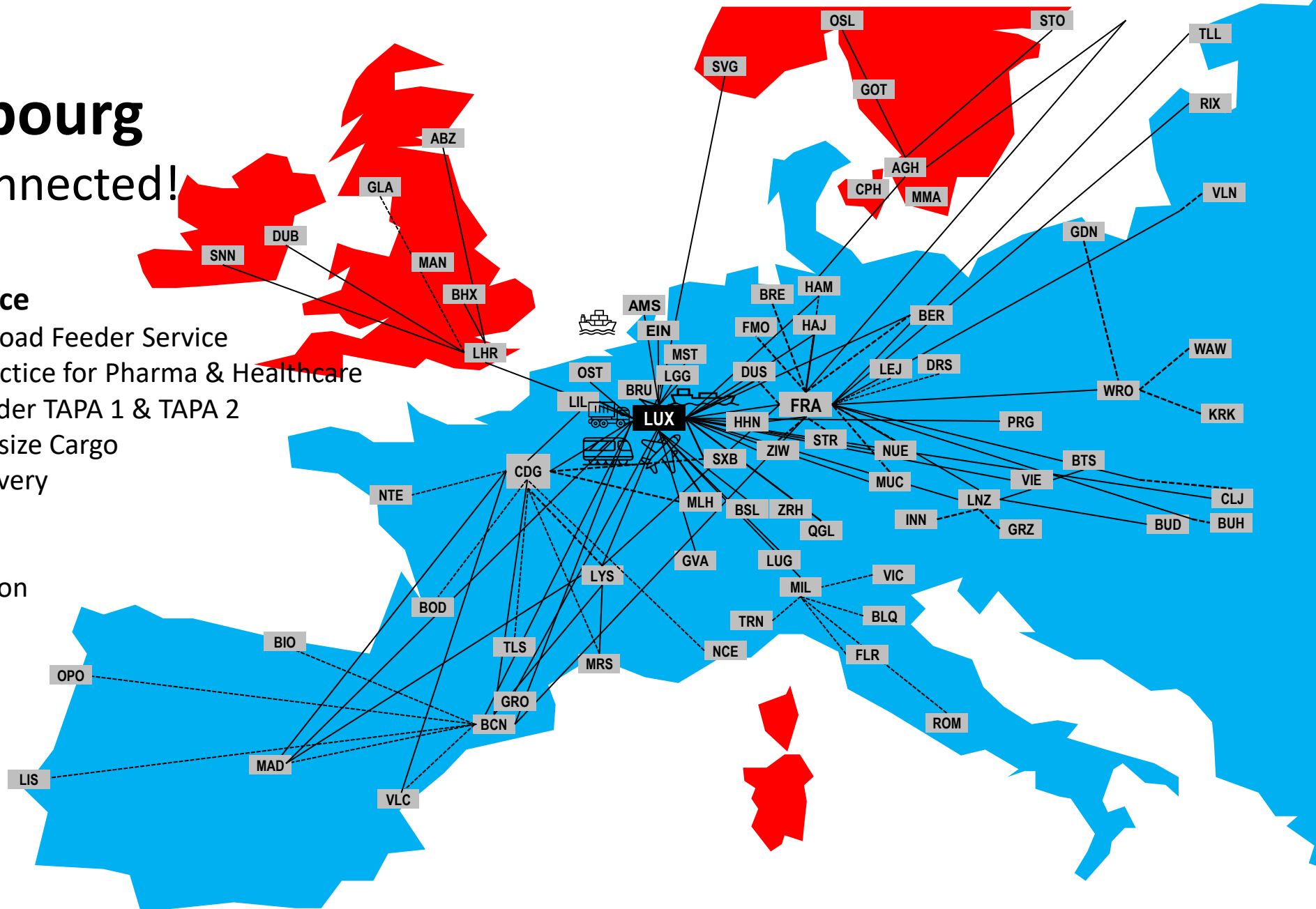
# Luxembourg is well connected!

## AIR RFS Road Feeder Service

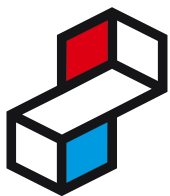
-  Scheduled European RFS Road Feeder Service
-  GDP Good Distribution Practice for Pharma & Healthcare
-  Secured Cargo Delivery under TAPA 1 & TAPA 2
-  Exceptional convoi for Off-size Cargo
-  Last Mile E-commerce delivery
-  Customs VAT Deferment
-  LTL and FTL-Network
-  Inland Waterway Connection
-  Multimodal Rail Platform
-  Logistics Warehouses

**Our Members are  
also well connected!**

**CLUSTER FOR LOGISTICS**







# VAT Optimized Supply Chain

## B2B Activities - VAT optimizing supply chain - pre-financing optimization

In many EU-countries, a pre-payment of import VAT has to be made at time of importing goods



### Pre-financing of VAT

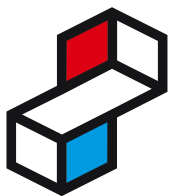
- ✗ causes costs and unavailability of capital

In Luxembourg, the payment of the import tax is shifted without any conditions to the VAT return



### No VAT pre-financing in case of import of goods

- ✓ Frees up capital tied up in VAT pre-financing
- ✓ Reduces cost of capital needed for VAT pre-financing



# Logistics in Luxembourg

## Intermodal Hub Bettembourg/Dudelange

### INTERMODAL HUB BETTEMBOURG

Capacity: 600.000 handlings/year (containers, craneable and non-craneable trailers)

2.333 Mio TKM\*<sup>1</sup>

210 departures per week\*<sup>2</sup> (conventional freight trains)

45 departures per week (combined transport)

80 Locomotives & 3.200 wagons\*<sup>3</sup>

### EUROHUB SOUTH DUDELANGE

250.000m<sup>2</sup> of logistics warehouse facilities on the entire hub







# Logistics in Luxembourg

## Eurohub Center Logistics Parc

Video Link:

[www.c4l.lu/eurohub](http://www.c4l.lu/eurohub)

### EUROHUB CENTER LOGISTICS PARC CONTERN

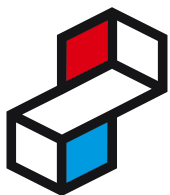
Logistics and Freight Forwarding Activities

152.500 m<sup>2</sup> of Logistics Surface

Air, Sea, Road, Logistics Services, 3PL & 4PL Activities

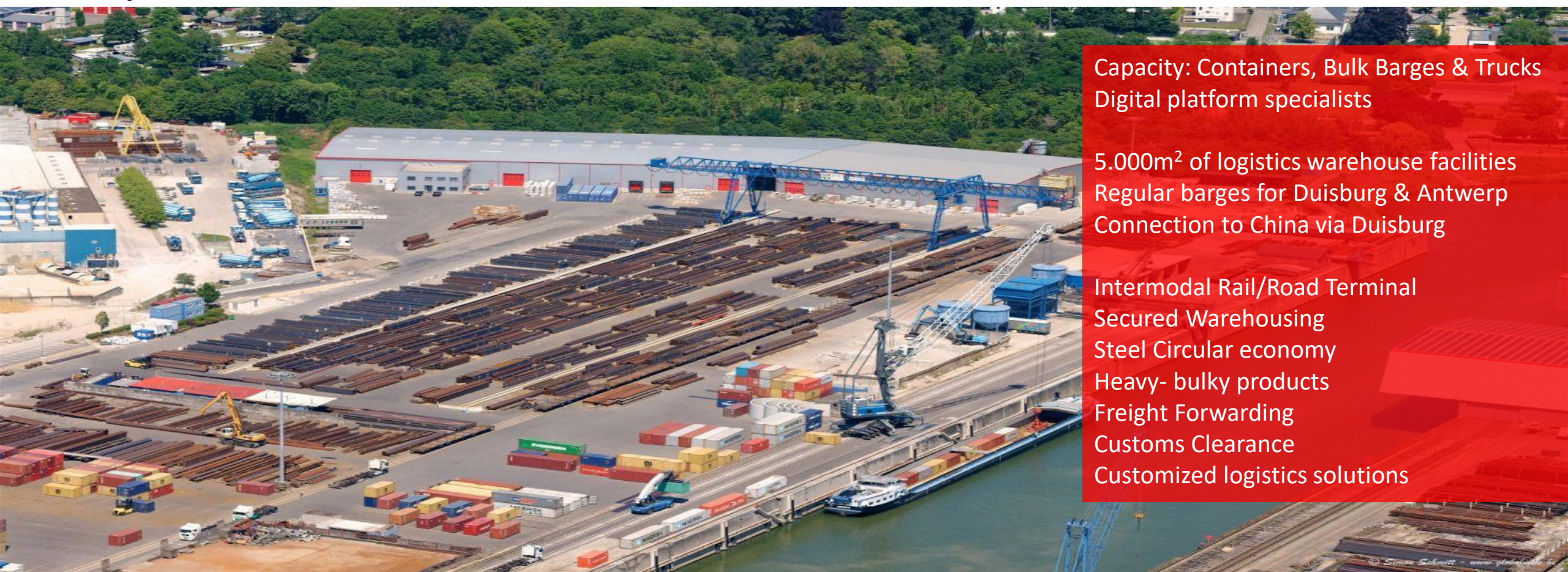






# Logistics in Luxembourg

## Intermodal Hub Merttert



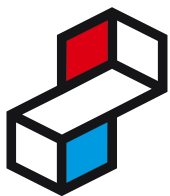
Capacity: Containers, Bulk Barges & Trucks  
Digital platform specialists

5.000m<sup>2</sup> of logistics warehouse facilities  
Regular barges for Duisburg & Antwerp  
Connection to China via Duisburg

Intermodal Rail/Road Terminal  
Secured Warehousing  
Steel Circular economy  
Heavy- bulky products  
Freight Forwarding  
Customs Clearance  
Customized logistics solutions

### CLUSTER FOR LOGISTICS





# Future of Logistics

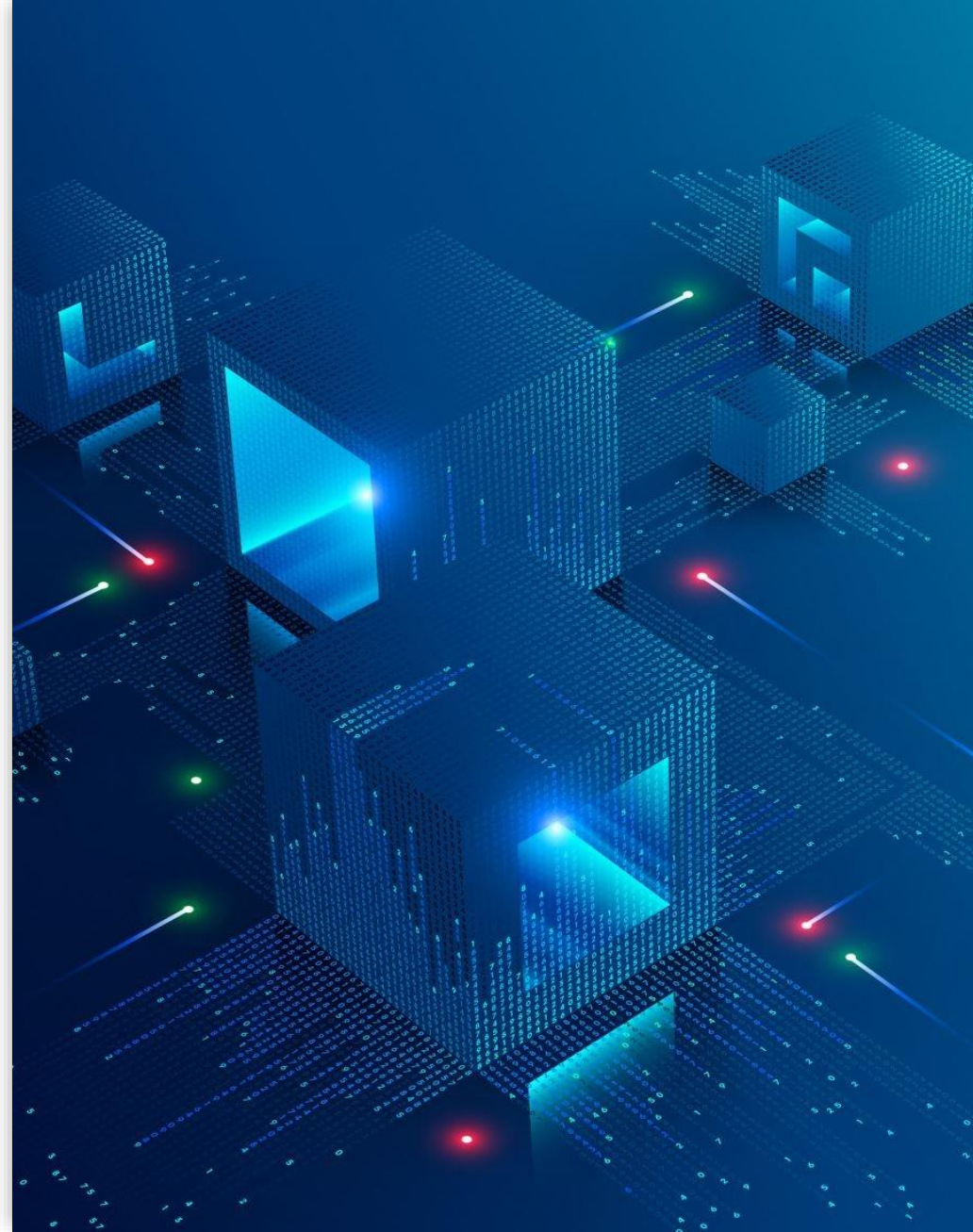
Let's make it happen!

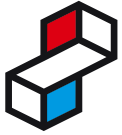
**Automation**, Smart **Logistics**, Big Data, Blockchain, AI, AR and IoT are all transforming the industry and revolutionizing the way goods, services and information flow through the **supply chain**.

The **technology** that is driving this **transformation** is only going to become more sophisticated as the **industry** evolves.

We can't wait to see what the future holds for **logistics**!

**Creating value is the Key**



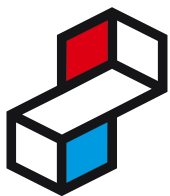


# Thanks to our Partners

Premium members > 100 members







# Contact us

Thank you for your attention!



Malik Zeniti

Director

[malik.zeniti@c4l.lu](mailto:malik.zeniti@c4l.lu)

+352 42 39 39 849



Daniel Kohl

Director

[daniel.kohl@c4l.lu](mailto:daniel.kohl@c4l.lu)

+352 42 39 39 837



Jil Brimaire

Logistics Development Advisor Project & Communication Advisor

[jil.brimaire@c4l.lu](mailto:jil.brimaire@c4l.lu)

+352 42 39 39 838



Ronny Wolff

[ronny.wolff@c4l.lu](mailto:ronny.wolff@c4l.lu)

+352 42 39 39 848